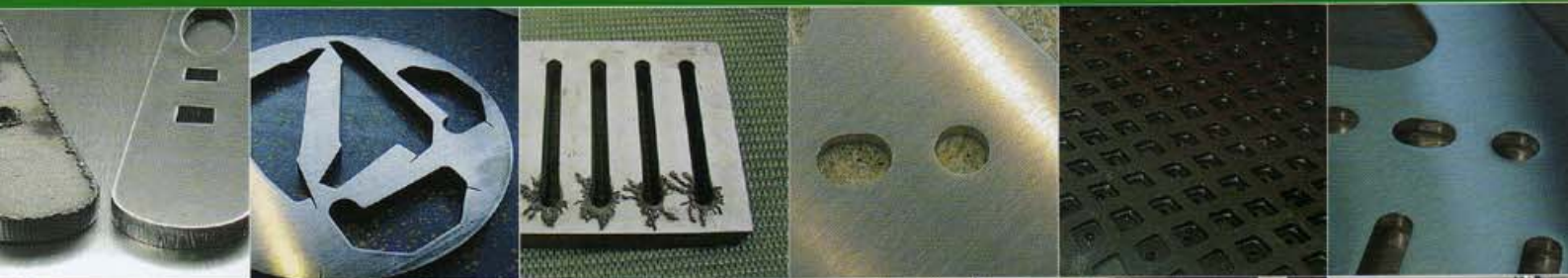




Oberflächenfinish Entgraten

- G 3
- G 6
- G 11
- G 13
- G 16

Surfacefinish
Deburring

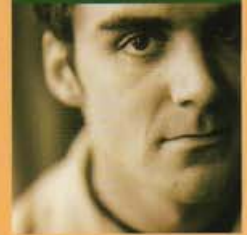


Euro

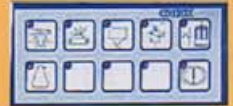
FINTEC

www.vbm-germany.com





Diagnoseanzeige
 Alarm check
 control panel



Schleifschuh
 für Superfinish
 and Hairlinefinish
 Pad roller for
 special execution



Automatische Transportbandsteuerung
 Automatic feed belt centering device

Auromatische Dickeneinstellung
 PA automatic thickness adjustment



Kontaktwalzen
 Feineinstellung
 Contact roller fine
 adjustment

Genutete, gummierte
 Kontaktwalzen
 D=180 mm
 Grooved contact
 rollers 180 mm



Transportband
 Geschwindigkeit
 Einstellung
 Conveyor
 belt speed
 adjustment

Tellerbürstenaggregat H
 Top Brush Unit H

G-3

Arbeitsbreite 300 mm
Usefull working width 300 mm

Schleiftechnik.

Die perfekte Maschine für
kleine + große Werkstücke

Grinding - Sanding.

The suitable machine
for small + large pieces.

R
RR
RB
RRb



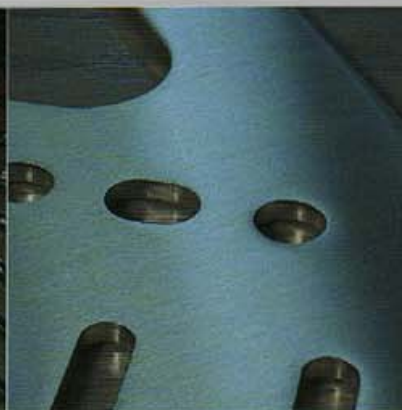
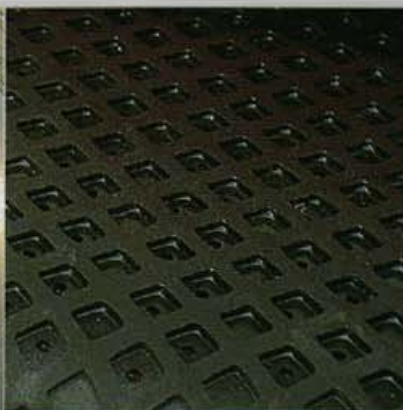
2RR - 2 Schleifaggregate
2RR - 2 Belts units



Schleifband
Bremsssystem
Abrasive belt
motor braking
system



Externes
Bürstenaggregat
External
brush unit



G-6

Arbeitsbreite 650 mm
Usefull working width 650 mm

Schleiftechnik.

Die perfekte Maschine für
kleine + große Werkstücke

Grinding - Sanding.

The suitable machine
for small + large pieces.



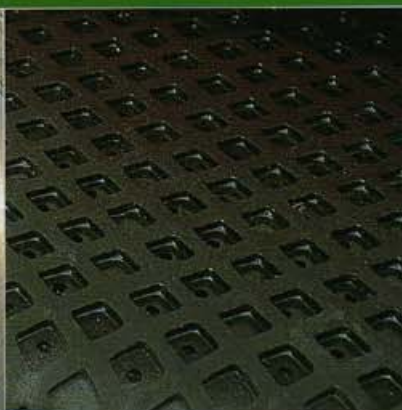
2RR - 2 Schleifaggregate
2RR - 2 Belts units



Schleifband
Bremsystem
Abrasive belt
motor braking
system



Externes
Bürstenaggregat
External
brush unit



G-11

Arbeitsbreite 1100 mm
Usefull working width 1100 mm

Schleifen Entgraten Oberflächenfinish.

Die perfekte Maschine zur
Nachbearbeitung von
Laserschritten oder
Stanzteilen

Grinding - Deburring Finishing.

The machine for
any use, suitable
for pieces cut with
punching or laser
machine.

2RB - 1 Schleifaggregat
+ 1 Bürstenaggregat
2RB - 1 Belt unit
+ 1 Brush unit



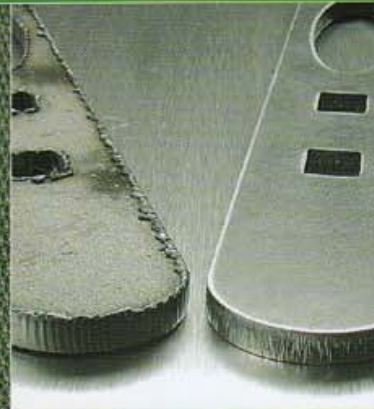
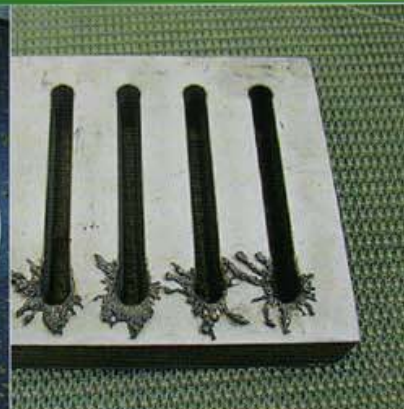
2RR - 2 Schleifaggregate
2RR - 2 Belts units



3RRR - 3 Schleifaggregate
3RRR - 3 Belts units



Schleifbandantriebe
mit separaten Motoren
Single motor for every unit



VBM
Brinkrode GmbH

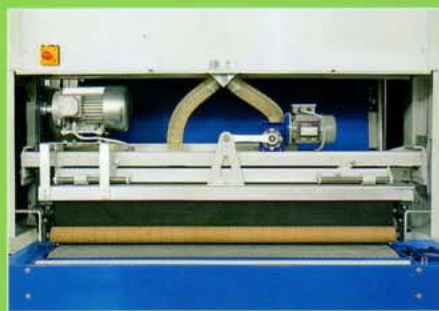
G-13

Brennschnitt Entgratung Oberflächenfinish.

Schwere Maschinenausführung
für Plasma-und Brennschnitte

Slag grinding Fine sanding.

Heavy duty machine.
The machine for pieces cut
with plasma or flame system.



Arbeitsbreite 1300 mm
Usefull working width 1300 mm



Scotch Bürstenaggregat
mit Oszillation
Scotch brite unit with oscillation

2 RP - 1 Schleifenaggregat
+ 1 Schleifschuh
2RP - 1 Belt unit
+ 1 Pad unit



G-16

Schleifen - Entgraten Oberflächenfinish Bürsten

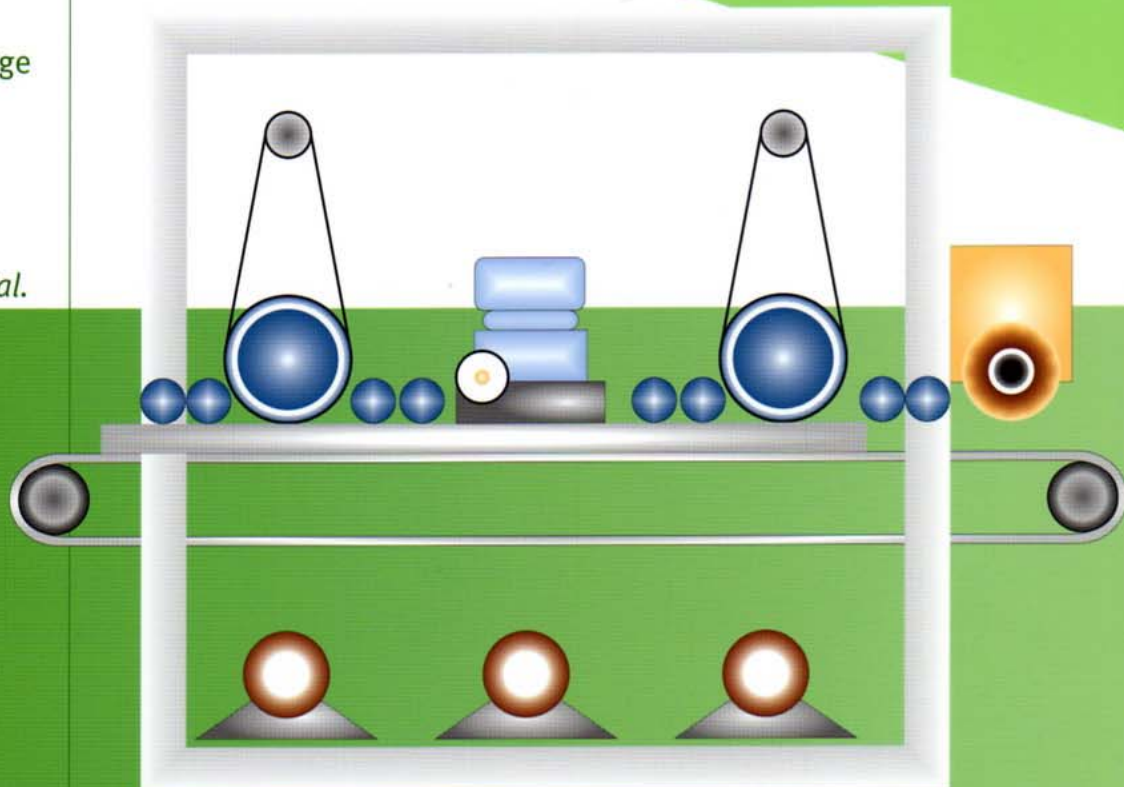
Schwere Maschinen -
ausführung für große
Werkstücke und beliebige
Materialien

Grinding - Deburring Finishing - Brushing.

Very heavy machine
for big pieces.
Suitable for any material.



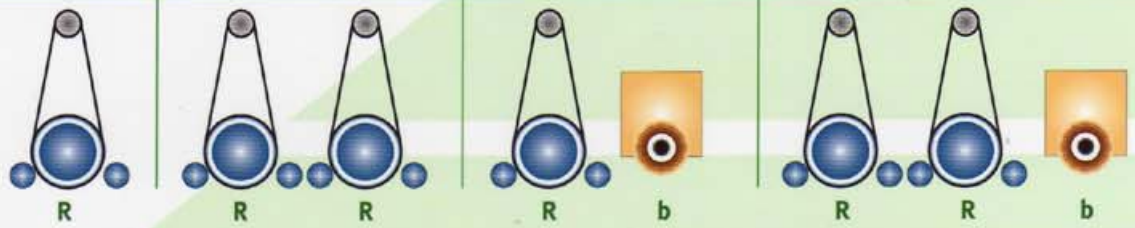
Arbeitsbreite 1650 mm
Usefull working width 1650 mm



Beliebige Maschinenkonfiguration

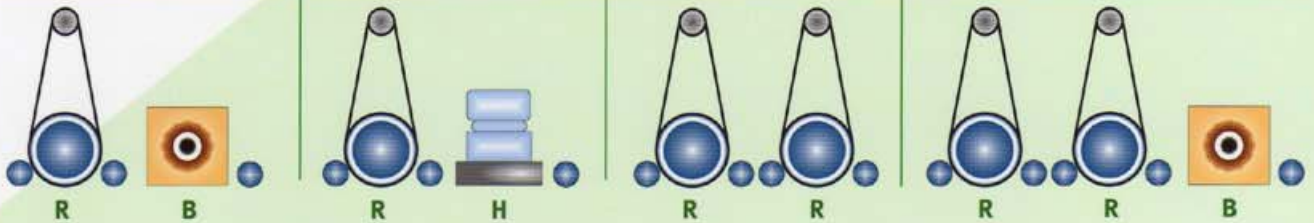
Arbitrary machine configuration

G-3
300 mm



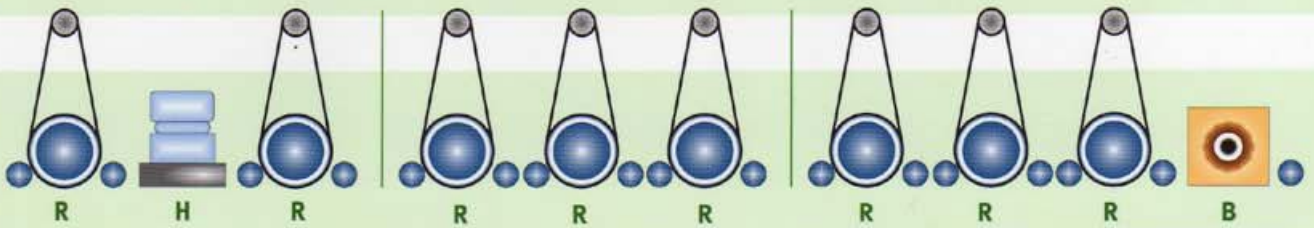
G-6
600 mm

G-11
1100 mm



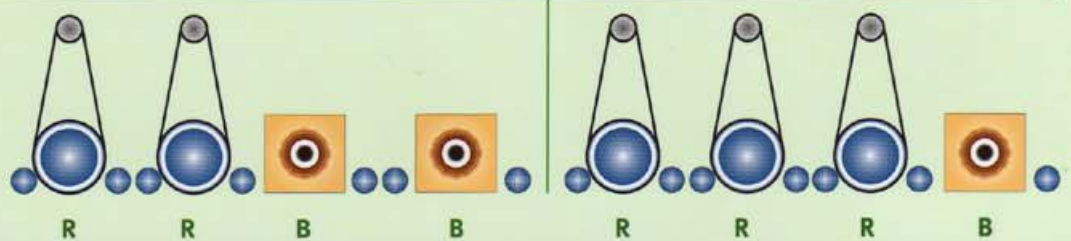
G-13
1350 mm

G-16
1650 mm



G-13
1350 mm

G-16
1650 mm



R

Schleifaggregat
Belt Unit

B

Bürstenaggregat
Brush Unit

P

Schleifschuh
Pad Unit

H

Tellerbürstenaggregat
Tup Brush Unit

b

Externes Bürstenaggregat
External Brush Unit

Bürsten Brushes

- 1: Stahlbürste - Steel wires
- 2: Scotchbürste - Scotch brite
- 3: Mixbesatzbürste - Mixed SB and belt



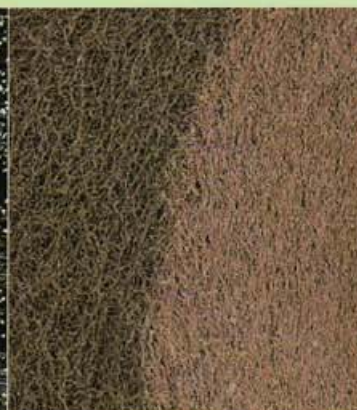
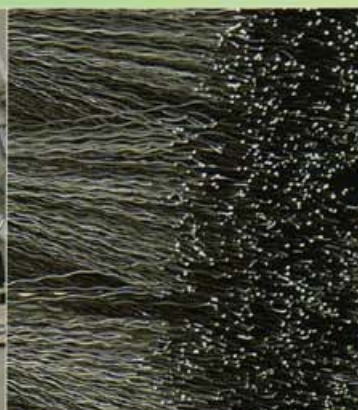
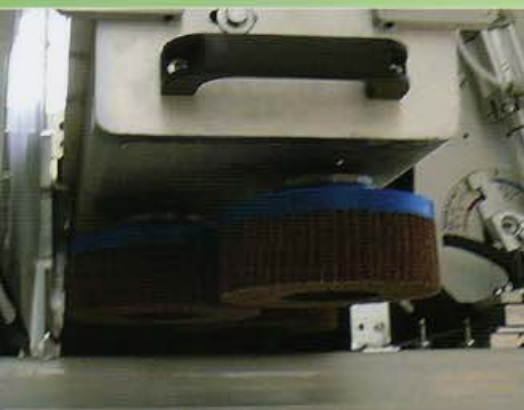
1

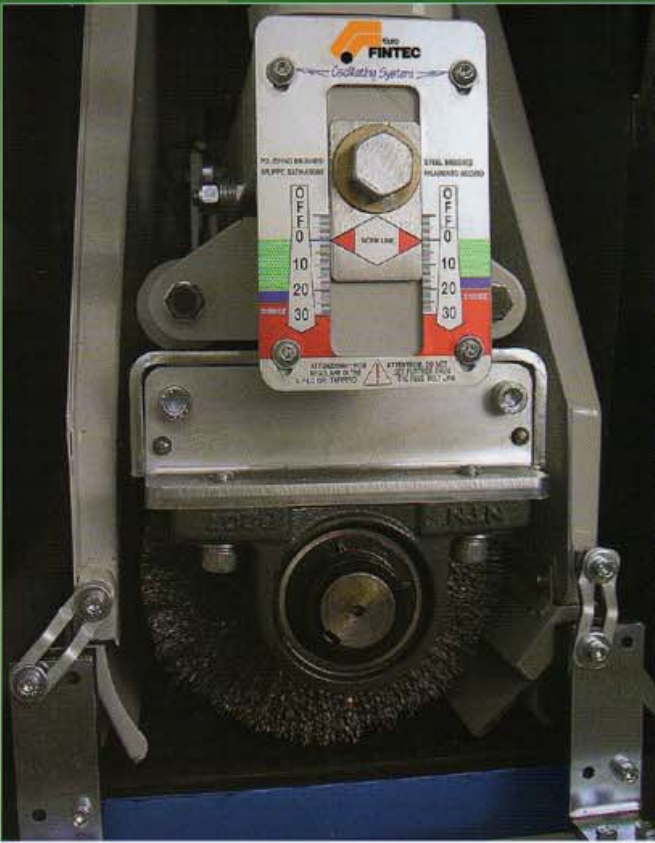


2



3





Bürstenaggregat B
Brush Unit B



Umlenkrolle Schleifaggregat mit Oszillation
Top roller belt unit with oscillation



Stahl-oder Scotchbürsten einsetzbar
Steel wire and scotch brite unit



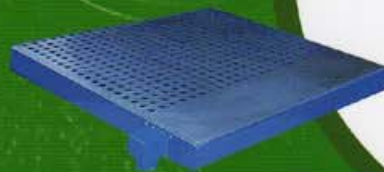
Transportband
Abblasvorrichtung
Cleaning conveyor
belt air compressed device



Bedientableau
Control panel



Touch Bildschirm
Touch Screen
Control panel



Vakuumgebläse
Transportband
Vacuum unit
conveyor belt



Modell Model		Aggregate Working units	Schleifbandantrieb Roller motor KW	Bürstenantrieb Brush motor KW	Druckluft Air Compressed Bar	Schleifbandlänge Belt length	Arbeitsbreite Working width mm	Schleifbandbreite Belt width mm	Abmessungen Machine dimension mm L x W x H	Gewicht Weight kg
G 3	R	1	4	2,2	6	1900	300	300	1100 x 650 x 2150	500
	RR	2								700
G 6	R	1	5,5	2,2	6	1900	650	670	1100 x 1350 x 2150	790
	RR	2								830
G 11	R	1	11	7,5	6	1900	1100	1120	1550 x 1450 x 2150	1520
	RB/H	2								1650
	RR	2								1720
	RRR	3							2050 x 1750 x 2250	2120
	RRB/H	3								2080
G 13	R	1	15/11	7.5	6	1900	1300	1320	1560 x 1740 x 2250	1750
	RB/H	2								1860
	RR	2								1920
	RRR	3							2050 x 1750 x 2250	2300
	RRB/H	3								2280
	RRRB/H	4								4800
G 16	RR	2	18,5 / 15	11	6	2620	1650	1670	2250 x 2050 x 2250	5500
	RB/H	2								5580
	RRR	3							2750 x 2050 x 2250	5950
	RRB/H	3								5920
	RRRB/H	4								6800

www.vbm-germany.com

Alle Rechte vorbehalten, Daten zu ändern. We reserve the right to change and improve data without previous notice.



www.vbm-germany.com

EUROFINTEC International
Breitbandschleif- und Entgratmaschinen im
automatischen
Durchlaufverfahren.

Intelligente Maschinenlösungen zum Schleifen und
Entgraten plattenförmiger
Werkstoffe, Vierkantrohre, Flachstäbe.

Es können beliebige Werkstoffe bearbeitet werden.

EUROFINTEC International
Wide belt Grinding and Deburring machines with
automatic feeding system.
Intelligent machine solutions for Grinding and Deburring
or flat workpieces, square pipes, flat bars.
Machines suitable for any material.

VBM
Brinkrode GmbH

VBM Brinkrode GmbH
Rubensweg 5, D-59302 Oelde / Germany
Tel.: +49-2522-901 707 Fax: +49-1805-060 337 033 92
E-Mail: info@vbm-germany.com
Web: www.vbm-germany.com